



# NAWCC NEWS

National Association of Watch and Clock Collectors  
Atlanta Chapter 24  
June 2015

## JUNE MEETING

Our June meeting will be on

June 7, 2015, from 9:30am—1:00pm.

The June program will be hosted by Chapter Vice-President Donald E. Jackson and will be the First (and perhaps Annual?) Chapter 24 Clock and Watch Show. . Bring your favorite clocks and watches with a description for everyone to see and enjoy! Categories will include “Oldest”, “Most Authentic”, “Most Unusual”, and “Barn Find.” Donald will also continue his presentation from the April meeting on Collecting Antique Clocks and Watches. Please see below for more information

## NAWCC NATIONAL CONVENTION COMING TO A TOWN NEAR YOU

The NAWCC National Convention will be held in Chattanooga on June 17-20, 2015, and it's time to make your plans if you haven't already. Tom Dunn and Chris Martin were on hand at our April meeting to recruit volunteers to help out with security and registration at the convention. Please see below for more information.

### NAWCC Atlanta Chapter 24 Officers and Directors

Henry Newman	President	docsclocks@windstream.net	(706) 212-0417
Donald E Jackson	Vice-President	treetop8@bellsouth.net	(770) 241-0502
Jim Guinn	Secretary	james.guinn@gpc.edu	(404)-377-3949
Dan Butt	Treasurer	edanbutt@yahoo.com	(678)-662-3848
Donna Kalinkiewicz	Past President	dmktimes2@att.net	(770) 321-1057
Chris Brown	Director 2015	browncg3@bellsouth.net	(770) 962-7480
Jae Martin	Director 2016	info@clockgalleryinc.com	(770) 813-8140
George Waterhouse	Director 2017	clockdoc35@yahoo.com	(770)-939-5799

## Minutes of NAWCC Atlanta Meeting on April 12, 2015



President Henry Newman called the meeting to order.

The meeting began with an auction, led by Brooks Coleman, of some clocks and other items brought in by special guest Denise Townsend. Denise's departed husband, Houston Townsend, was the owner of Townsend Fine Antique Clocks in Chamblee, GA.

Henry welcomed two new members, David Wayne, who joined between meetings, and Barry Treadwell from Honea Path, SC, and guests Denise Townsend, Tom and Lenore Dunn from Chapter 61 in Huntsville, AL, and Gary and Nancy Combs.

The minutes of the February meeting were approved as published.

Dan Butt gave the Treasurer's report (see below).

It was decided that Chapter 24 would donate \$500 to the National Office, \$500 to the National Convention, and \$250 to the American Clock and Watch Museum in Bristol, CT, in memory of Ward Francillon. The National Convention is also looking for donations of door prizes.

Chris Brown received a letter from the National Office and his 20-year recognition pin! Congratulations Chris!

Tom Dunn, from the Convention Policing Committee, asked for volunteers to take 2-hour shifts to walk the convention floor and watch for suspicious activity. Please contact him at [tomdunn@knology.net](mailto:tomdunn@knology.net) if you are interested in volunteering.

Renee and James Coulson volunteered to be Chapter 24's Representatives at the National Board Meeting at the Convention and express our needs.

Chris Martin, General Chair for the 2015 National Convention, asked for volunteers for the convention for on-site registration, the mart, security, etc. Please contact him at [cbmartin@charter.net](mailto:cbmartin@charter.net) if you are interested in helping out.

Brooks Coleman reported that George Waterhouse fell off of a ladder and broke nine ribs. George is recuperating at home with a nurse and physical therapist, but his right shoulder was is still giving him trouble. He isn't ready for visitors yet, but is accepting calls.

Brooks also gave a report on the state of the State clocks. Everything is running at the Capitol, but there is still one clock to be returned. We will be receiving a DVD copy of the Georgia Traveler episode (coming out soon) in which the clocks are visited.

(Good grief, are these long minutes, or what?!?)

## Treasurer's Report

By Dan Butt

Fifty-four members, including one new member, attended the April meeting. We welcomed Barry Treadwell as the new member. Bill Said was the lucky prize winner and he donated his prize back to the chapter. Billy Johnson donated three clock dial faces to the chapter. So far only 71 members, or 63%, of our 2014 membership, have paid their 2015 dues. You may submit your \$30 to "Attn: Dan Butt, 1255 Hickory Crest Lane, Cumming, GA 30041".



## THE GROANER

### Courtesy of George Waterhouse

(Please note that although George is at home suffering with his broken ribs, he is not suffering so much as to keep him from making us suffer with a groaner!)

[Get better soon, George, we all wish you a speedy recovery!](#)

Do you know why everybody is so worn out on April 1?

It's because they just completed a 31-day March.

## LAST MONTH'S PUZZLER

An Honorable Mention to Randy Grunwell for getting almost all of last month's puzzler, Sherlock Holmes and the Misplaced Sundial!

Solution: The coincidence was that the Kerguelen Islands are one of the very few inhabited places with almost the same latitude south of the equator as London is north. (Remember Sherlock lives in London as mentioned earlier.) This is important because the gnomon on a sundial (the part that casts the shadow) must be set for the location's latitude. Why wouldn't the sundial work for Sherlock? Because sundials in the southern hemisphere "run" counterclockwise! (By the way, this is why clocks run "clockwise", because clock hands are made to mimic the motion of the shadow of a gnomon on a sundial in the northern hemisphere, where our historical line of clocks were invented.) How could the sundial work as well for Sherlock as it did for Watchson's friend on the Kerguelen Islands? Because it didn't have any numbers, only hour markings. So it would work just as well clockwise as counterclockwise. That is, it would work just as well in the north as it does in the south!

## APRIL PROGRAM HIGHLIGHTS

### **“Collecting Antique Clocks and Watches” by Donald Jackson**

The presentation started out with a great Charlie Chaplin scene of a clock shop, which was followed by a video History of Time Keeping Devices.

If you want to buy an antique clock or watch, the hardest part is evaluating the movement. If a seller won't let you see the movement, look elsewhere!



Main items to look for...

1. Overall cleanliness.
2. Movement being a marriage, that is, not original to the clock.
3. Oblong pivot holes.
4. Alteration of the movement.
5. Bent/damaged gears or pinions.

Examine before you buy, and be objective!

The clock case — notice the type, missing parts, molding, veneers, decoration, original wood or painted, original label, how is the movement attached?

The dial — signed?, type, length of hands

Movement — general condition, type, strike type, pendulum?

Glass — condition, original?

Summary — You should have a good idea of the overall clock, and the quality of the repairs done over time. You will need to determine how much the clock is worth to you depending on how much you want it.

If you don't know what you're looking for, you'll never see it.

Thank you, Donald, for a very interesting program!

## JUNE PROGRAM

### First (and perhaps Annual?) Chapter 24 Clock and Watch Show

Atlanta Chapter 24 will hold its first Clock & Watch Show at the meeting on June 7, 2015. This show will give members the opportunity to enter a clock or watch in one of four categories:

Oldest – oldest clock or watch.

Most Authentic – complete and authentic to the original dial, movement and case.

Most Unusual – uncommon, rarely seen or known of

Barn Find – in “as found” condition, as if it had been stored in the wrong place for a long time

Show entries will be displayed for the first hour of the meeting. During that hour, a panel of judges will each use a prepared checklist to evaluate each entry. (If you are a judge, you can enter a clock or watch in the show, but you will not judge your entry.) The entry that scores the highest points from the evaluation will be the winner of that category. In addition, the judges will select a “Best of Show” winner from the category winners. Winners will be announced and awards presented after the meeting program.

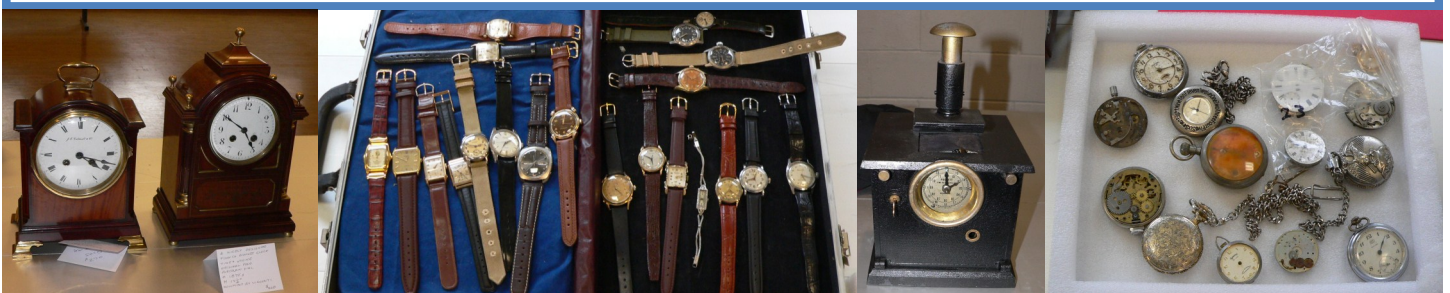
*If you want to participate in the June Show, then do the following:*

1. Select the category that you want to enter. Send an email to the Chapter Secretary, Jim Guinn ([james.guinn@gpc.edu](mailto:james.guinn@gpc.edu)), by May 23<sup>rd</sup> (or as soon as you can) telling him which category you will enter.
2. Prepare a description of your entry to display at the meeting. Include basic information such as maker, style, estimated date and anything else relevant to the category.

Have your entry in by the start time of the meeting.

Judges for the Show will be Jim Coulson, Bill Smart, Warren Brook, Dan Maddox, and Austin Jones.

Please email Donald Jackson at [treetop8@bellsouth.net](mailto:treetop8@bellsouth.net) if you have any questions.





## CALLING ALL CLOCK ENTHUSIASTS

Do you want to learn to maintain and repair mechanical clocks? Join a group of Chapter 24 members who meet every Tuesday evening (as long as the school is open) for hands-on learning with Chapter experts. It's free, and it's fun!

Berkmar High School, 405 Pleasant Hill Road, Lilburn, GA

Tuesdays, 6-8pm, year round except official school holidays

“Now let me see,” the Golux said. “If you can touch the clocks and never start them, then you can start the clocks and never touch them.

That's logic, as I know and use it.”

From The 13 Clocks

By James Thurber

## AN OPEN INVITATION FROM THE SOUTH ATLANTA CLOCK CLUB



A group of clock enthusiasts in the south metro area meet at 11:00 on the 4th Thursday of each month at Tim's Country Kitchen in Fayetteville. The topic of discussion at their last meeting was spring winders. Chapter 24 members are invited to attend and can get more information by calling Gene Baker (770-251-2588) or Billy Johnson (678-622-9970). The restaurant address is 175 Banks Crossing, Fayetteville GA 30214.

## THIS MONTH'S ALMOST PUZZLER

### The Adventures of Sherclock Holmes - The Relativity Paradox

Sherclock Holmes and Dr. John Watchson were relaxing in front of their fire one evening when Watchson looked up from his book and said, "Sherclock, do you believe in time travel?" "Well, Watchson, what do you think we're doing right now? Although I must admit that during the opera last night I thought that time stood still," replied Sherclock. "No, no, that's not what I meant ..." said Watchson. "Yes, I know what you meant," said Sherclock. "Well, Dr. Einstein theorizes that if someone could travel at a speed near the speed of light, time would seem to pass more slowly for them. And I would imagine that for them it would seem as though they travel into the future. How's that for time travel?" "Sherclock, what year is this?" asked Watchson. "It is anno domini eighteen hundred and eighty one," said Sherclock. "And when will Dr. Einstein publish his Theory of Relativity?" asked Watchson. "Nineteen hundred and five," said Sherclock. "Sherclock, don't you see a slight problem here?" "Watchson, really, what's a little anachronism between friends?" laughed Sherclock. "Alright, fine, but don't you think this has gone on quite long enough for one newsletter?" asked Watchson. "Yes, quite. What say you we continue this next time," said Sherclock.

What is the Relativity Paradox that Sherclock and Watchson never quite got to? If you can answer this, you must have traveled into the future and read the August newsletter! For the rest of us, we'll just have to wait until then to find out! (courtesy of Jim Guinn)

## IT'S ALMOST PAST MEMBERSHIP RENEWAL TIME

Chapter 24 membership is renewed annually, if you haven't already, and 37% of you haven't, don't forget to renew. Just fill out the form below and write a check.

Dues are \$30 per year for single or family membership

(\$35 if you opt out of electronic delivery).

### CHAPTER 24 NAWCC MEMBERSHIP APPLICATION/RENEWAL

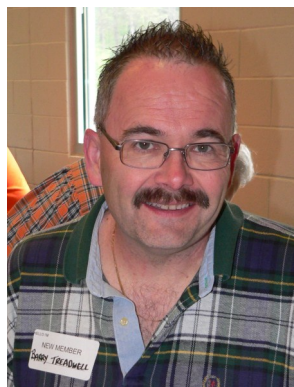
Name(s)\_\_\_\_\_Phone\_\_\_\_\_

Address\_\_\_\_\_

City\_\_\_\_\_State\_\_\_\_\_Zip\_\_\_\_\_

Email\_\_\_\_\_Fax\_\_\_\_\_

## MEMBERS, GUESTS, AND SCENES FROM THE APRIL MEETING



Barry Treadwell  
New Member



I'm afraid David was  
camera shy! We'll  
try to catch him in  
June!

David Wayne  
New Member



Denise Townsend  
Guest



Nancy and Gary Combs  
Guests



Lenore and Tom Dunn  
Guests



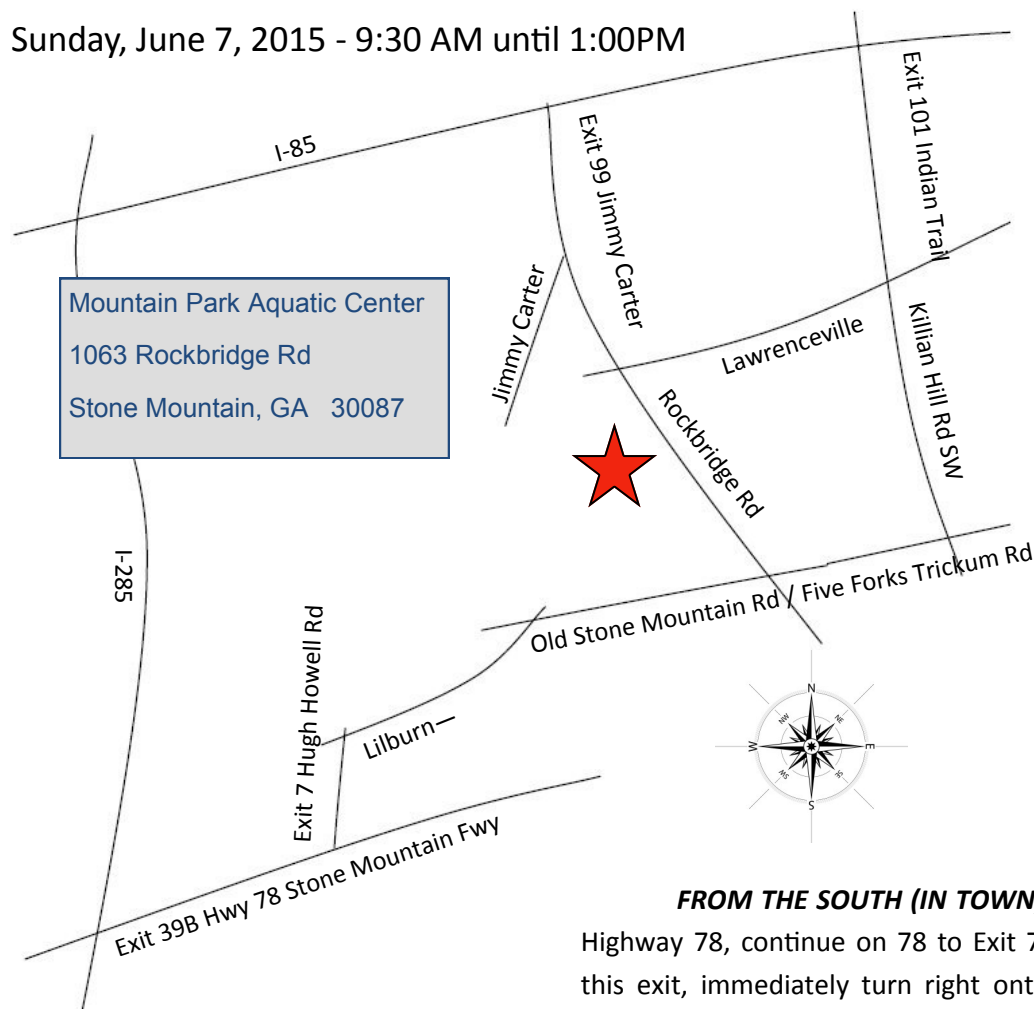
"Don't mind me.  
I'm just killing time."



The Atlanta Chapter of the NAWCC meets the first Sunday of February, April (second Sunday in April this year), June, August, October and December. As part of the Mid-South group, it also sponsors the regional meeting in Chattanooga on Labor Day weekend each year, in rotation with the Alabama and Tennessee chapters.

## Next Meeting of Chapter 24

Sunday, June 7, 2015 - 9:30 AM until 1:00PM



**FROM THE NORTHWEST:** Take the I-85 east exit from I-285. Exit 99 and turn right on Jimmy Carter (Hwy 140). Continue and bear left onto Rockbridge Rd. Aquatic Center will be on right—two blocks before Five Forks Trickum Rd.

**FROM CUMMING / HALL COUNTY:** Take Exit 101 Indian Trail / Lilburn Rd NW off southbound I-85. As you cross Hwy 29 Lawrenceville Rd, Indian Trail becomes Killian Hill Rd. Turn right onto Five Forks Trickum Rd. Turn right onto Rockbridge Rd. Aquatic Center is two blocks north on left.

**FROM THE SOUTH (IN TOWN):** Take I-285 to Exit 39B which is Highway 78, continue on 78 to Exit 7 onto Hugh Howell Road. After this exit, immediately turn right onto Lilburn-Stone Mountain Road. After 0.2 mile, turn right onto Old Stone Mountain Road. Continue to the intersection of Rockbridge and Five Forks Trickum. Turn left on Rockbridge Rd. The Aquatic Center is two blocks north on left.

Jim Guinn, Secretary  
NAWCC, Chapter 24  
1177 Thomas Road  
Decatur, GA 30030

Membership paid through 2015.